

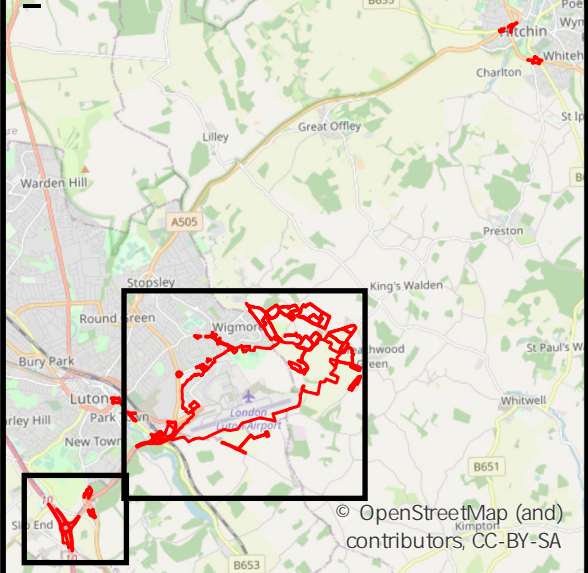
This drawing may contain mapping by permission of Ordnance Survey on behalf of HMSO © Crown Copyright and database rights 2019 Ordnance Survey 0100031673

All structure positions are indicative. The proposed works will be subject to detailed design development. The changes will be within limits of deviation specified in the Development Consent Order.

- Legend**
- Proposed Development Boundary
 - Sitewide major works to enable development
 - Airfield Works
 - Terminal and Associated Works
 - Airport Support Facilities
 - Landscape and Mitigation
 - Highway

Note: All Work locations are illustrative and numbering indicative and subject to change

First Issue	AB	HP	CS	03/12/21	P01
Revision History	Drawn	Checked	Approved	Date	Rev.



Luton Rising
 Our airport. Our community. Our planet.
 Luton Rising
 Hart House Business Centre
 Kimpton Road, Luton, LU2 0LA
 www.lutonrising.org.uk

**London Luton Airport
 Development Consent Order**

Drawing Title
**Figure 4.1 Illustrative Work Locations –
 Assessment Phase 1**

Purpose of issue SUITABLE FOR INFORMATION				Suitability S2	
Drawn AB	Checked HP	Approved CS	Date 03/12/21	Scale 1:15,500	Size A3

DCO Application Ref. TR020001	APFP Regulation	DCO Document Ref.
----------------------------------	-----------------	-------------------

Drawing Number LLADCO-3C-ARP-000-DR-YE-0112	Revision P01
--	-----------------

Project - Phase - Originator - Asset/Zone - Sub-Asset - Type - Discp. - Number